

CONCRETE TRANSFORMER PAD SINGLE PHASE 25 & 50 KVA

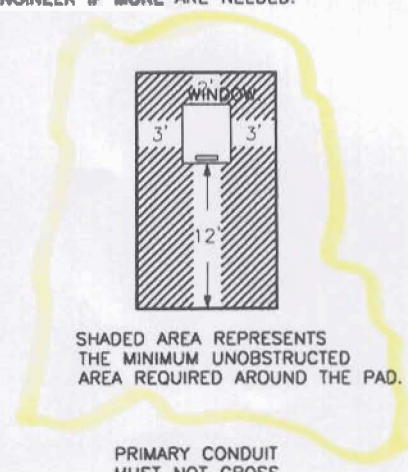
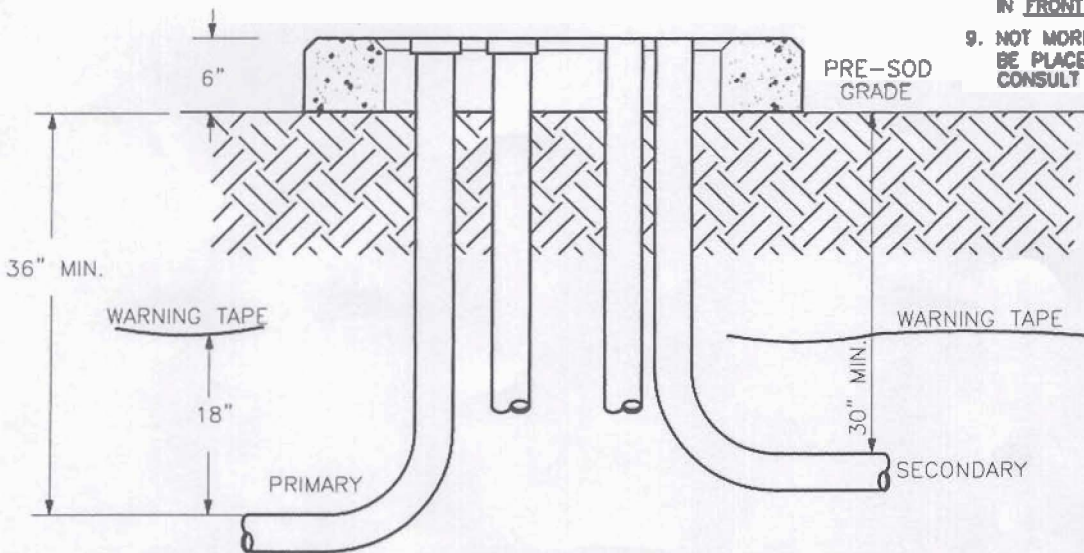
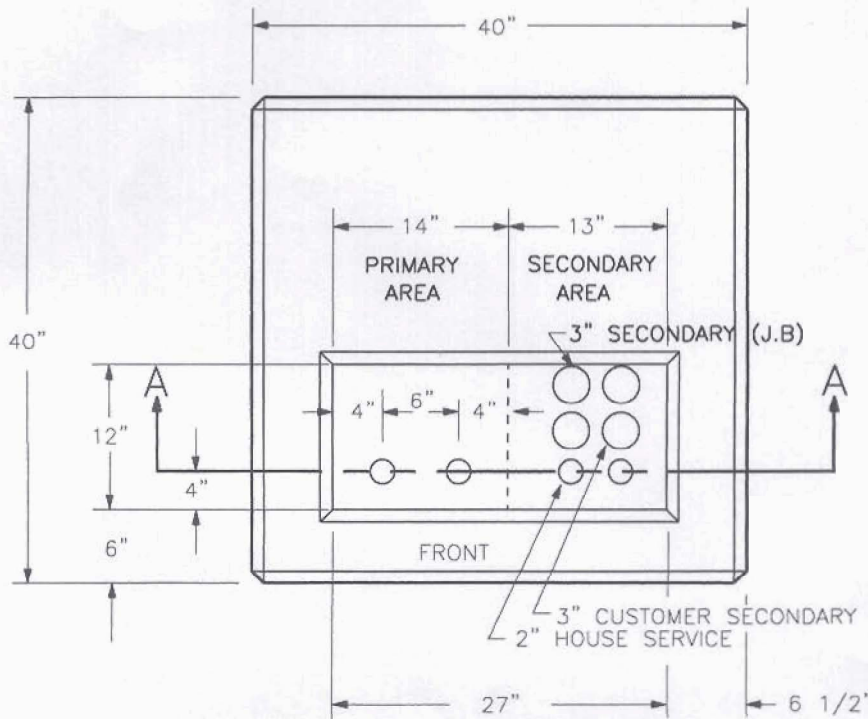
NOTES:

1. THIS PAD NORMALLY ACCOMODATES 25 & 50KVA SINGLE PHASE PADMOUNT TRANSFORMERS AND PADMOUNT FEED THRU ENCLOSURES.
2. PAD TO BE REINFORCED WITH 3/8 INCH REINFORCING RODS ON 8" CENTERS.

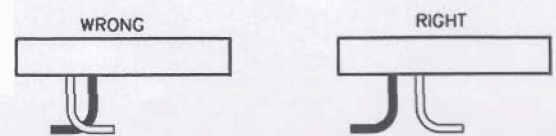
TOP SURFACE OF PAD TO HAVE BROOM FINISH AND ALL TOP EDGES TO HAVE 1 INCH CHAMFERS. ON PRECAST PADS, A BROOM FINISH IS NOT REQUIRED AND TAPERED VERTICAL SURFACES WILL BE ACCEPTABLE.

TOP OF PAD TO BE LEVEL AND 6 INCHES ABOVE PRE-SOD GRADE.
3. **SECONDARY CONDUIT** INSTALLED BY CUSTOMER MUST BE INSTALLED IN "SECONDARY AREA" TO TRANSFORMER INSTALLATION. ANY CONDUIT NOT INSTALLED IN DESIGNATED AREA WILL BE RELOCATED BY CUSTOMER AT CUSTOMER EXPENSE.

CONDUIT SIZE VARIES PER APPLICATION.
4. **PRIMARY CONDUIT** MUST BE LOCATED IN THE PAD WINDOW "PRIMARY AREA" AS SHOWN. ALLOWABLE TOLERANCE FOR CONDUIT PLACEMENT IN "PRIMARY AREA" WILL BE 1" ±
5. CONDUIT SHALL BE FLUSH WITH, BUT NOT EXTEND ABOVE TOP SURFACE OF PAD.
6. FORMS AND REBAR FOR ALL BUILT-IN-PLACE PADS MUST BE INSPECTED BY OUC PRIOR TO POURING OF CONCRETE.
7. PLACE 3", 4" CONDUITS IN THE BACK OF WINDOW.
8. PLACE 2" (HOUSE SERVICE) CONDUIT IN FRONT OF WINDOW.
9. NOT MORE THAN 6 CONDUITS SHALL BE PLACED IN SECONDARY CONSULT ENGINEER IF MORE ARE NEEDED.



SECTION A-A



OUC STOCK NO.
048-02600

No.	Date	Revision	By	Ck.
	08-13-97	CHANGED NOTES AND ADDED DIMENSIONS	RLF	
4	10-7-94	CHANGED TITLE		
3	09-9-94	CHANGED PRE-SOD GRADE		
2	7-11-94	REMOVED NOTE		
3	08-06-03	REVISED AS PER MARK-UP FOR CONTRACT	M.H.	

CONSTRUCTION STANDARDS OH & UG Distribution System Orlando Utilities Commission			
Drawn by	Checked by	by	Date
FRYMYER			7-2-96