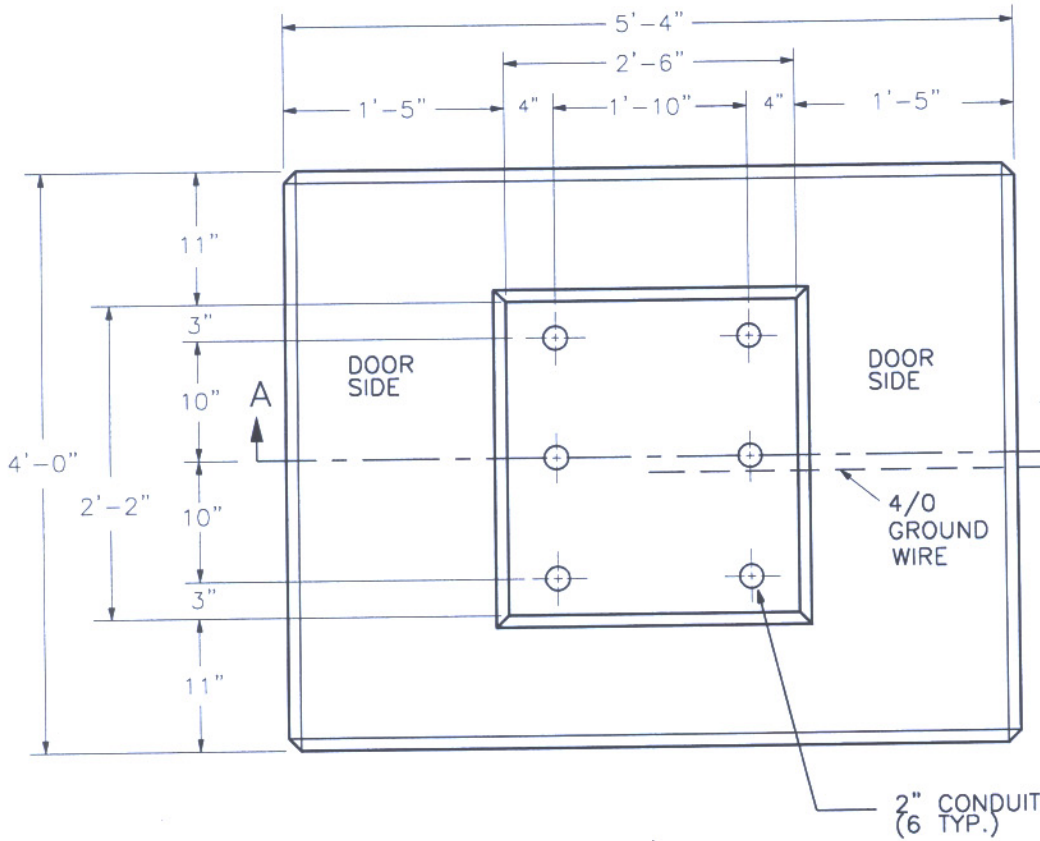
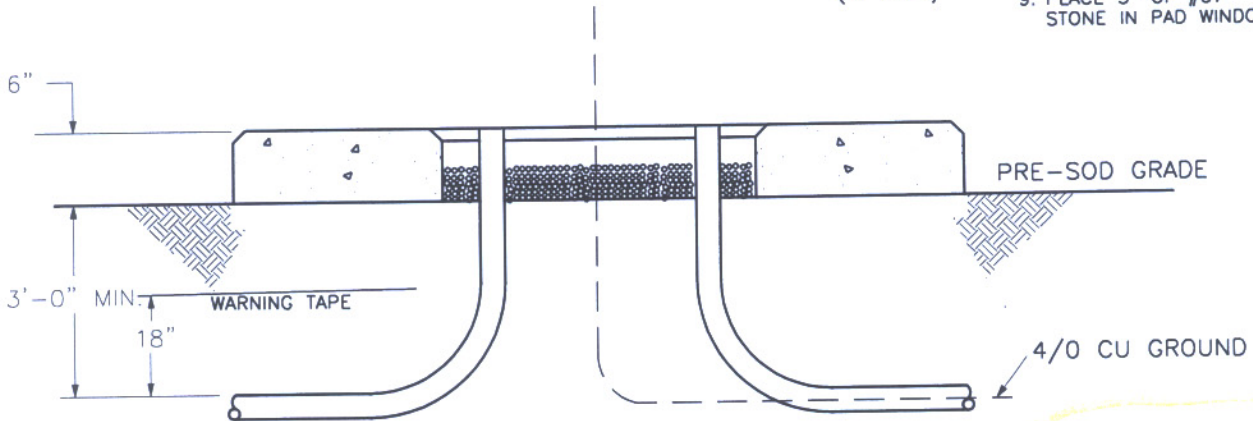


CONCRETE SWITCHGEAR PAD SINGLE-PHASE 15KV

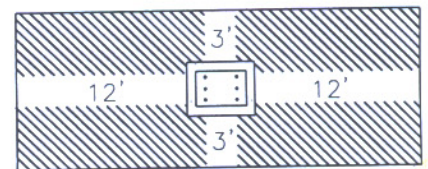


NOTES:

1. PAD TO BE REINFORCED WITH 3/8 INCH REINFORCING RODS ON 8 INCH CENTERS.
2. TOP SURFACE OF PAD TO HAVE BROOM FINISH AND ALL TOP EDGES TO HAVE 1 INCH CHAMFER. ON PRECAST PADS A BROOM FINISH IS NOT REQUIRED AND TAPERED VERTICAL SURFACES WILL BE ACCEPTABLE.
3. TOP OF PAD TO BE LEVEL AND 6 INCHES ABOVE PRE-SOD GRADE.
4. CONDUIT TO BE APPROXIMATELY FLUSH BUT NOT TO EXTEND BEYOND TOP SURFACE OF PAD.
5. ANY CONDUIT NOT INSTALLED IN DESIGNATED AREA WILL BE RELOCATED BY CUSTOMER AT CUSTOMER'S EXPENSE.
6. FORMS AND REBAR FOR ALL BUILT IN PLACE PADS MUST BE INSPECTED BY OUC PRIOR TO POURING OF CONCRETE.
6. TOLERANCE FOR CONDUIT PLACEMENT WILL NOT EXCEED $\pm 1"$.
7. 4/0 GROUND WIRE WILL ENTER AT CENTER OF PAD WINDOW.
8. NO LESS THAN 5' OF 4/0 19 STRAND BARE COPPER SHALL BE LOOPED IN THE CENTER OF THE SWITCH PAD OPENING.
9. PLACE 3" OF #57 STONE IN PAD WINDOW.



SHADED AREA REPRESENTS THE MINIMUM UNOBSTRUCTED AREA REQUIRED AROUND THE P



4	08-06-03	REVISED AS PER MARK-UP FOR CONTRACT	M.H.
3	08-13-97	CHANGED NOTES AND ADDED DIMENSIONS	RLF
2	09-9-94	CHANGED PRE-SOD GRADE	
1	1-24-92	CHANGED DIMENSIONS	
No.	Date	Revision	Ck.

CONSTRUCTION STANDARDS
OH & UG Distribution System
Orlando Utilities Commission

Drawn by	Checked by	Approved by	Date
OLIVER			7-17-91